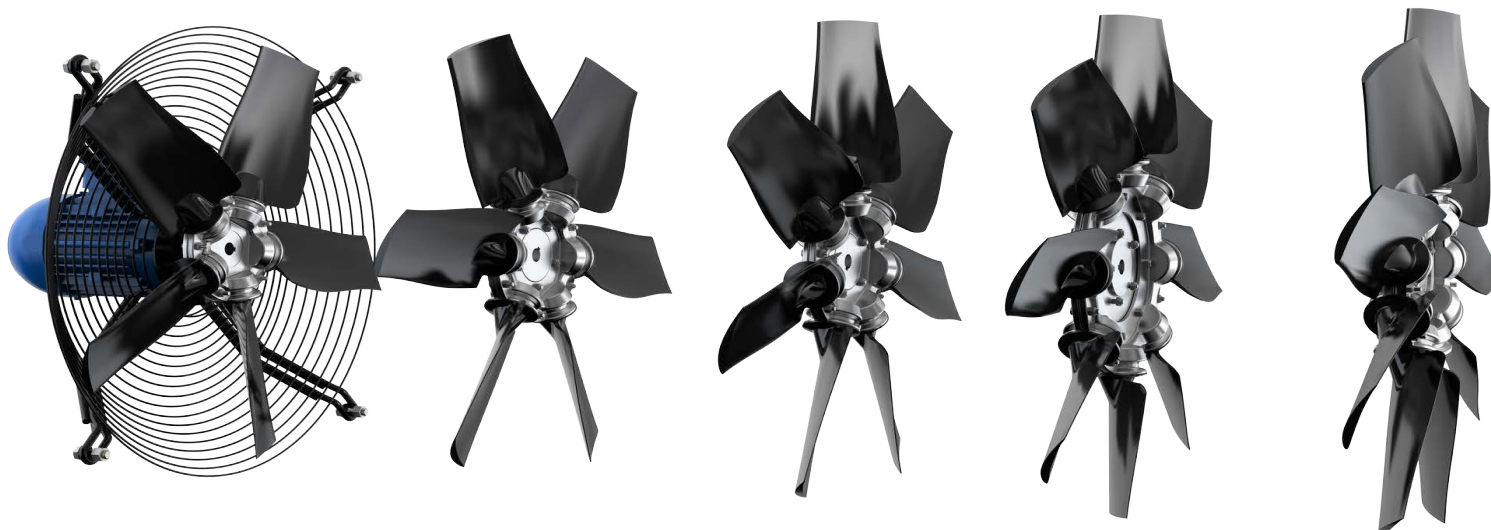


# *Motor support as an integrated part of protection guard*



*CUSTOMFAN offers tailor made fan solutions. We do not only tailor the multi-wing impellers, we optimize the complete fan for your specific project.*



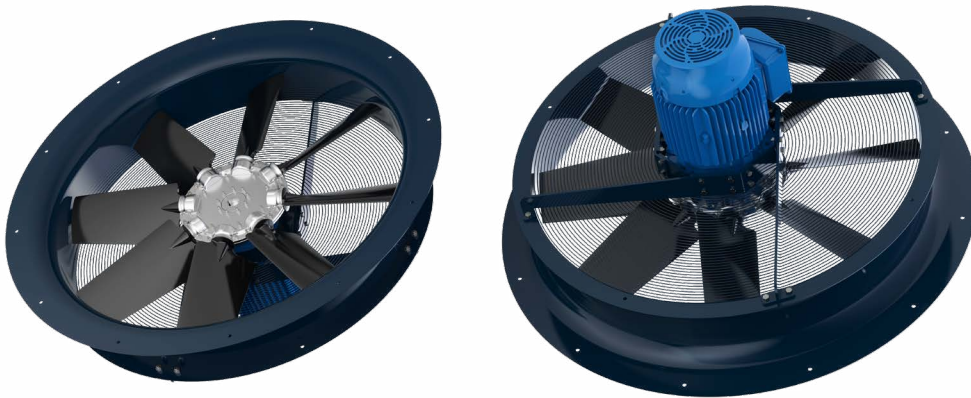
*Fans with support of motor as a part of the protection guard.*



*info@customfan.net  
Tel: +34 93 183 98 83  
C/ Major de Sarrià 14, 08017  
Barcelona (Spain)*



*Radiator application*



*Refrigeration application*



- *Diameters from 315mm until 1000mm.*
- *Flange motor AC, EC or hydraulics.*
- *Custom made Multi-Wing impellers according to your duty point (200.000 configurations).*
- *Local mounting, less space needed for transport.*
- *Optional fan inlet*
- *Materials, treatments and paint according to your specifications*