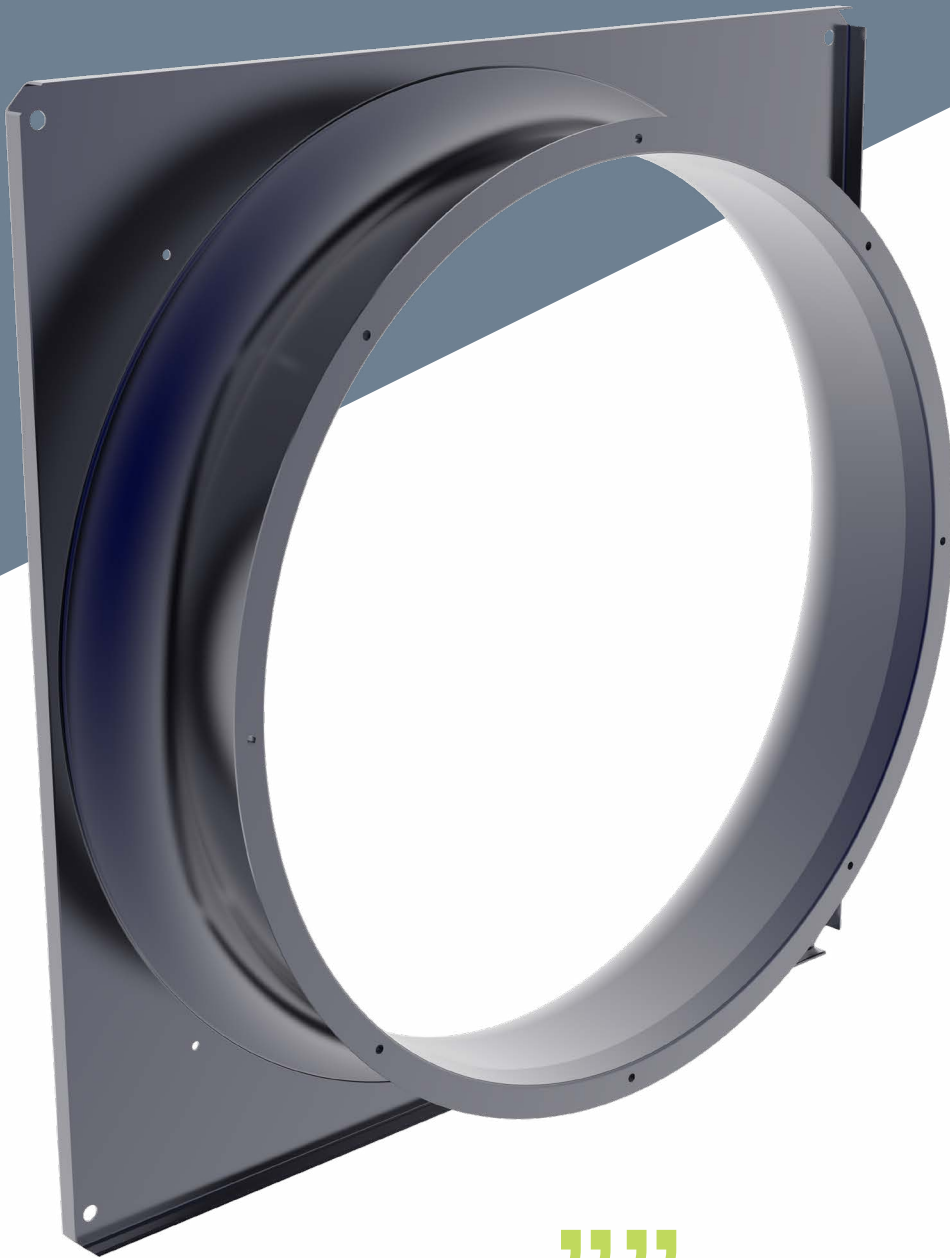


CUSTOMFAN PRESENTS

# CUSTOMFAN FAN INLET'S

Optimized to improve the efficiency of the fan

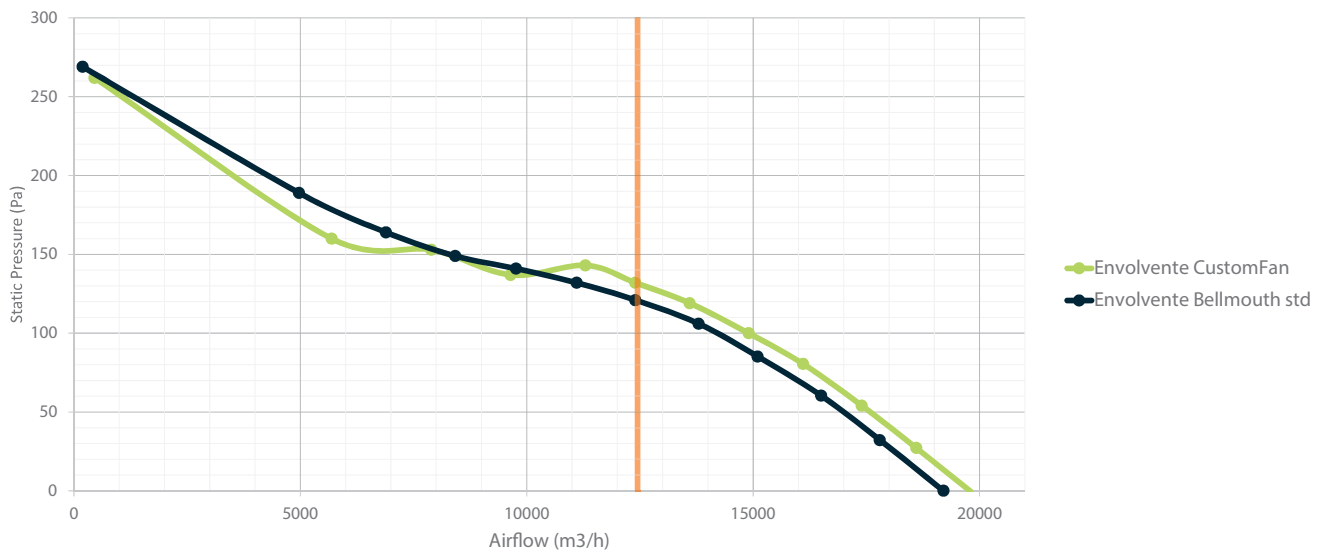


**CUSTOMFAN fan inlet's overcoming the performance of the standard Bellmouth inlet.**



a company of

**EFLOW**

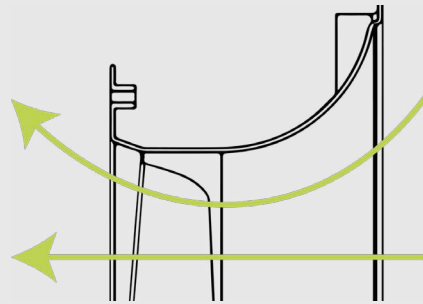


Comparison curves for impeller 792/7-7/35/AL/4Z between standard bellmouth inlet and the CUSTOMFAN inlet at 900 RPM. The table shows performances for the same airflow.

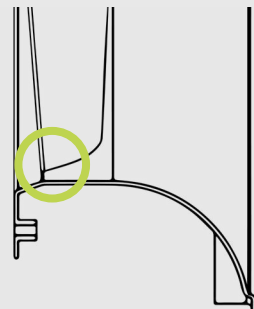
	Airflow (m3/h)	Static Pressure (Pa)	Sound (dB)	Efficiency (%)
<b>Customfan inlet</b>	12.500	131 (+5,6%)	79,6 (-4,1 dB)	68 (+4,6%)
<b>Std Bellmouth inlet</b>	12.500	124	83,7	65



**CUSTOMFAN inlet**



**Diffuser at the outlet**



**Trailing edge aligned with diffuser**



**Std Bellmouth inlet**

The trailing edge at the tip of the blade must be aligned with the entrance point to the diffuser. By adding a diffuser, as a part of the fan inlet, and an optimal placement of the impeller you will get a better performance than with the standard bellmouth inlet.

Eflow CUSTOMFAN S.L. - Barcelona (Spain)

E: [info@customfan.net](mailto:info@customfan.net)

T: +34 93 183 98 83

W: <http://customfan.net>